

4.7 HOME SCIENCE (441)

4.7.1 Home Science Paper 1 (441/1)

SECTION A (40 marks)

Answer all the questions in this section in the spaces provided.

1. Give the meaning of the term food hygiene. (2 marks)
2. Identify **two** functions of fats and oils in the body. (2 marks)
3. Highlight **two** reasons why reheating food is discouraged. (2 marks)
4. State **one** use of each of the following kitchen utensils: (2 marks)
 - (a) sauce pots
 - (b) casseroles
5. State **two** advantages of blanching vegetables. (2 marks)
6. Define the term cosmetics. (2 marks)
7. Outline **three** practices that help to maintain healthy teeth. (3 marks)
8. State **two** reasons why weaning a baby too early is discouraged. (2 marks)
9. Name **two** types of brushes used to remove dirt from surfaces in the home. (1 mark)
10. State **two** causes of poor sanitation. (2 marks)
11. Highlight the importance of pouring hot detergent water into a kitchen sink after cleaning it. (1 mark)
12. Identify **two** points to consider when buying land for a family house. (2 marks)
13. Define the term goods. (1 mark)
14. State **two** advantages of buying goods using hire purchase method. (2 marks)

15. Give **two** points to consider when choosing pegs. (2 marks)
16. Identify **two** laundry processes that may be carried out before washing a cotton shirt (2 marks)
17. Name **two** balance marks used on patterns in clothing construction. (1 mark)
18. Give **one** use of each of the following stitches: (2 marks)
- (a) Oversewing
 - (b) Overcasting
19. State **one** function of each of the following parts of a sewing machine: (3 marks)
- (a) pressor foot
 - (b) tension disc
 - (c) spool pin
20. Identify **two** types of pockets used on a boy's trouser. (2 marks)
21. Differentiate between natural and man-made fibres. (2 marks)

SECTION B (20 marks)
(Compulsory)

Answer question 22 in the space provided.

22. Your parents are away on a trip and you have been left in charge of the home. Outline the procedure to follow when:
- (a) cleaning a concrete floor of the verandah thoroughly (10 marks)
 - (b) cleaning a discoloured melamine plate thoroughly (6 marks)
 - (c) dry cleaning your father's acrylic neck-tie (4 marks)

SECTION C (40 marks)

Answer any two questions from this section in the space provided after question 25.

23. (a) Explain **five** advantages of making a family budget. (10 marks)
- (b) Describe **five** factors that may lead to malnutrition. (10 marks)
24. (a) Explain **three** factors that determine the type of seam to use on garments. (6 marks)
- (b) Explain **three** points to consider when choosing an ironing board. (6 marks)
- (c) Explain **four** properties of polyester that make it suitable for making school uniforms. (8 marks)
25. (a) Explain **three** different ways of providing family shelter. (6 marks)
- (b) Explain **four** ways of meeting social needs of a patient recovering at home. (8 marks)
- (c) Giving a reason in each case, describe **three** activities carried out on the mother at the ante-natal clinic. (6 marks)

BOY'S SHIRT

A pattern of a boy's shirt is provided. You are advised to study the sketches, instructions and layout carefully before you begin the test.

MATERIALS PROVIDED

1. **Pattern Pieces**
 - A. Shirt back
 - B. Shirt front
 - C. Sleeve
 - D. Collar
2. Plain lightweight, light coloured cotton fabric 50 cm long and 90 cm wide.
3. Cotton sewing thread to match the fabric.
4. One large envelope.

THE TEST

Using the materials provided, lay, cut out and make **one side** of a boy's shirt to show the following processes:

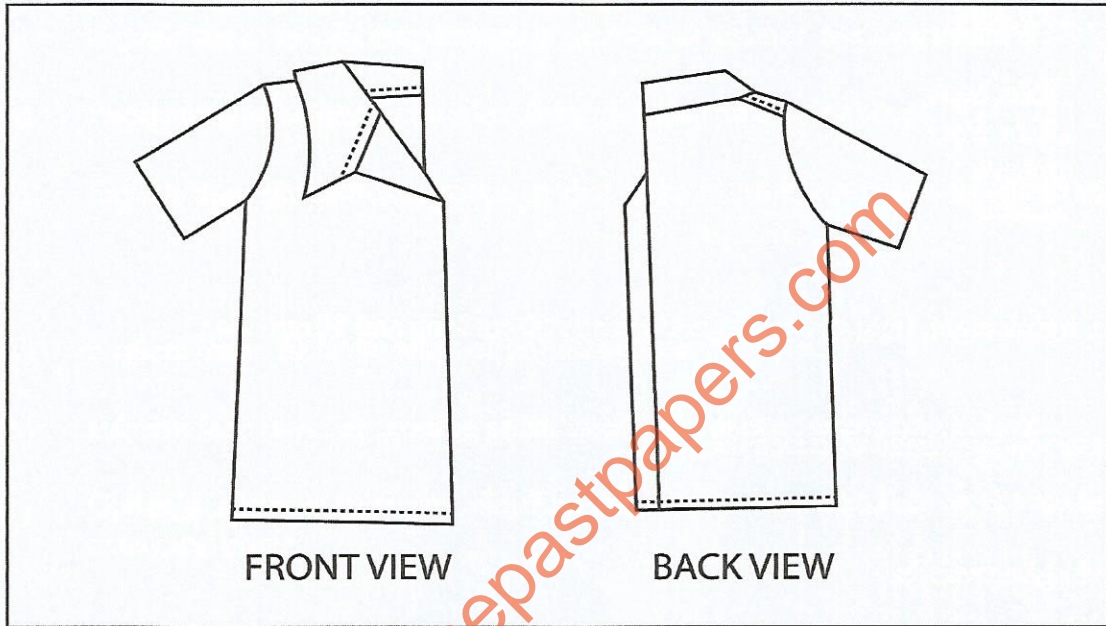
- (a) Cutting out. (12 marks)
- (b) Working of the shoulder seam using a double stitched seam. (8½ marks)
- (c) Working of the side seam using an open seam. (12 marks)
- (d) Preparing and attaching the sleeve. **Do not trim the armhole seam and do not finish the sleeve hem.** (14 marks)
- (e) Working of the front edge facing. (6 marks)
- (f) Preparing and attaching the collar and finishing with even tacking stitches (19 marks)
- (g) Finishing the lower shirt hem using machine stitching. (13 marks)
- (h) Overall presentation. (5½ marks)

At the end of the examination, firmly sew onto your work, on a single fabric, a label bearing your name and index number. Remove the needle, pins and loose threads from your work. Fold your work neatly and place it in the envelope provided.

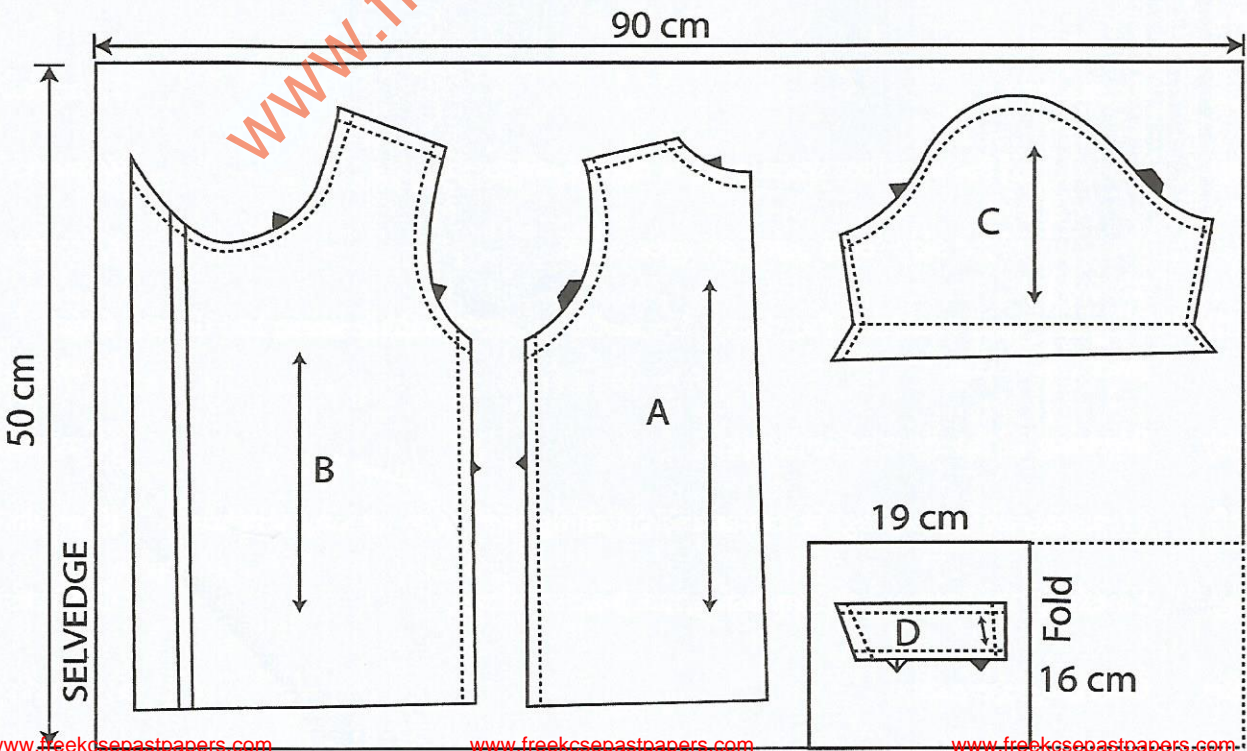
Do not put scraps of fabric in the envelope.

Do not seal the envelope.

SHIRT VIEWS



LAYOUT (NOT DRAWN TO SCALE)



THE TEST

You are staying with your 10 year old brother who is recovering from an illness.

Using the ingredients listed below:

1. Prepare, cook and present a **one course meal** for **him**, using at least **two** cooking methods.
2. Include a nutritious drink.
3. Use **tray** service.

Ingredients:

- Beef/chicken/green peas
- Carrots
- Onions
- Potatoes/rice
- Milk
- Margarine
- Green leafy vegetables
- Tomatoes
- Dhania
- Green pepper/capsicum
- Oil/fat
- Salt
- Fruits in season
- Sugar

PLANNING SESSION – 30 minutes

Use separate sheets of paper for each task listed below and a carbon paper to make duplicate copies.

Then proceed as follows:

1. Identify the dishes and write their recipes.
2. Write your order of work.
3. Make a list of the foodstuff and equipment you will require.