

4.0 PART TWO: THE YEAR 2021 KCSE EXAMINATION QUESTION PAPERS

4.1 ART AND DESIGN (442)

4.1.1 Art and Design Paper 1 (442/1)

SECTION A (20 marks)

Answer all the questions in this section in the spaces provided.

1. (a) Distinguish between the **two** types of space used in the illustration below. (2 marks)



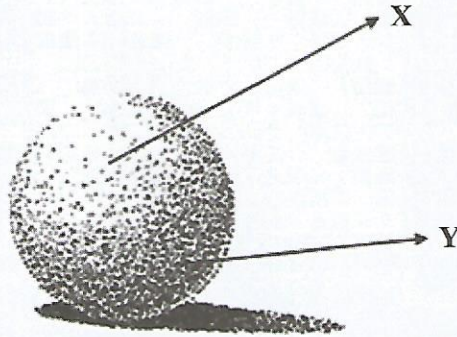
- (b) Explain how pattern is used to create rhythm in a work of art. (2 marks)
- (c) Name **two** tools used in oil painting technique. (2 marks)
- (d) List **two** types of ornaments worn around the arms. (2 marks)
- (e) The table below consists of painting media and their respective binding substances.

Complete the table by filling in the missing medium and binding substances.

	Medium	Binder
1	(½ mark)	Egg Yolk
2	Water colour	(½ mark)
3	Acrylic paint	(1 mark)

- (f) Identify **two** uses of line in graphic design. (2 marks)
- (g) Highlight **one** reason why paraffin wax and beeswax are mixed during batik process. (2 marks)

- (h) Distinguish between a monochromatic colour scheme and an analogous colour scheme. (2 marks)
- (i) Analyse the illustration below and label the parts marked X and Y. (2 mark)



- (j) Study the artwork below and state the technique used to produce it. (2 marks)

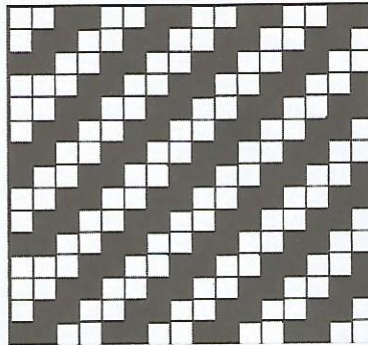


SECTION B (25 marks)

*Answer **all** the questions in this section in the spaces provided.*

2. (a) Highlight **one** limitation of using wood as a material in sculpture making. (1 mark)
- (b) State **two** reasons why grog is added to clay. (2 marks)
- (c) Explain the term assemblage as used in sculpture. (2 marks)

3. The diagram below represents a technique in weaving.



- (a) Identify the technique. (1 mark)
- (b) Explain two characteristics of the weave structure. (2 marks)
- (c) Outline the process of making the weave. (2 marks)
4. The image below is a work of art.



- (a) Identify the type of artwork. (1 mark)
- (b) State two tools used in the execution of the artwork. (2 marks)
- (c) Explain the challenges faced by artists associated with the artwork. (2 marks)
5. Outline and discuss the five states of clay during pottery making process. (5 marks)
6. In the space provided below, construct the word “design” in calligraphy. Indicate the $\frac{1}{2}$ x-height and x-height. (5 marks)

SECTION C (15 marks)

Answer any **one** question in this section in the space provided after **question 9**.

7. (a) Outline **two** uses of display panels and props during an art exhibition. (2 marks)
- (b) Identify **three** factors to consider when displaying artworks at an exhibition. (3 marks)
- (c) Explain the process of drawing a townscape from observation using a view finder. (10 marks)
8. (a) State **two** functions of a frame in silk screen printing. (2 marks)
- (b) Light sensitive solution is used in a screen printing process. List **two** other substances that can be used to block the mesh before printing. (2 marks)
- (c) Discuss the process of preparing a screen for printing using any one of the substances mentioned in 8(b). (11 marks)
9. (a) Distinguish between mosaic and montage as picture making processes. (2 marks)
- (b) Point out **two** functions of using fixatives in pencil drawings. (2 marks)
- (c) Outline the steps of making a pictorial composition using a combination of montage and painting. (11 marks)

4.1.2 Art and Design Paper 2 (442/2)

Answer only **ONE** question chosen from **EITHER** alternative A or B.

This paper is marked out of **100 marks**.

ALTERNATIVE A: DRAWING OR PAINTING

Use of geometrical instruments, tracing paper, coloured pencils, crayons, luminous pens or marker pens is **forbidden** in this alternative.

EITHER

DRAWING

1. Create a close-up composition of a crocodile pouncing on its catch.

The composition should be within an area of 35 cm × 42 cm.

OR

PAINTING

2. Create a captivating composition depicting “Freedom!”

Depict the theme within an area measuring 35 cm × 42 cm.

ALTERNATIVE B: GRAPHIC DESIGN

*Use of geometrical instruments and tracing paper is **allowed** in this alternative. The use of coloured pencils, crayons, luminous pens, marker pens and computers is **forbidden**. The colour of the working surface (paper) will not be considered as one of the colours required.*

EITHER

3. “Mazingira Run” is a marathon used to create awareness on environmental conservation.

The event will be held on the World Environment Day. The organising committee requires a poster with a catchy slogan and an appropriate illustration to advertise the event.

Design a poster in not more than **four** colours measuring 25 cm × 37 cm which should include:

- (a) Title: Mazingira Run
- (b) Venue: Mazingira grounds
- (c) Date: 5th June 2022
- (d) Time: 8:00 am to 12:00 pm.
- (e) Charges: Ksh 1,000

OR

4. A group of students has developed a new phone application called “Sober App” that monitors drug and substance abuse. The App will be exhibited during the science fair.

Design a:

- (a) trademark for the app measuring 8 cm × 10 cm in **three** colours.
- (b) background theme for the App in **not more than four** colours measuring 20 cm × 30 cm.